

JMLA Bronze - Tonleitern

Waldhorn (f - e²)

portato, legato, staccato

C - Dur



G - Dur



D - Dur



A - Dur



E - Dur



F - Dur



JMLA Bronze - Tonleitern

Waldhorn (f - e²)

portato, legato, staccato

Bb - Dur



Es - Dur



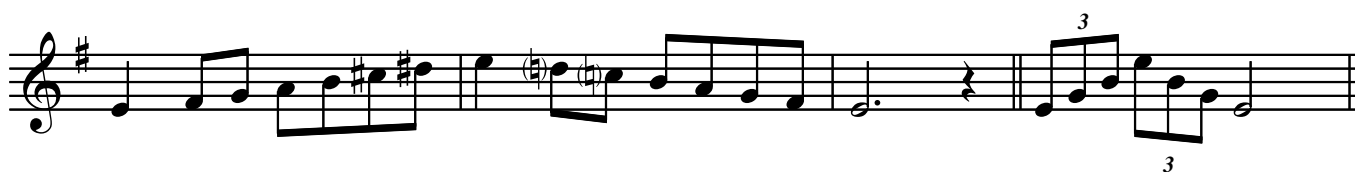
As - Dur



a - Moll



e - Moll



JMLA Bronze - Tonleitern

Waldhorn (f - e²)

portato, legato, staccato

h - Moll

Two staves of musical notation for the h - Moll scale. The first staff shows the scale ascending and descending. The second staff shows the scale ascending and descending, with a triplet of eighth notes at the end.

fis - Moll

Two staves of musical notation for the fis - Moll scale. The first staff shows the scale ascending and descending. The second staff shows the scale ascending and descending, with a triplet of eighth notes at the end.

cis - Moll

Two staves of musical notation for the cis - Moll scale. The first staff shows the scale ascending and descending. The second staff shows the scale ascending and descending, with a triplet of eighth notes at the end.

d - Moll

Two staves of musical notation for the d - Moll scale. The first staff shows the scale ascending and descending. The second staff shows the scale ascending and descending, with a triplet of eighth notes at the end.

JMLA Bronze - Tonleitern

Waldhorn (f - e²)

portato, legato, staccato

g - Moll

Two staves of musical notation for the g - Moll scale. The first staff shows the ascending scale: G2, A2, Bb2, C3, D3, Eb3, F3, G3. The second staff shows the descending scale: F3, Eb3, D3, C3, Bb2, A2, G2, followed by a triplet of G2, F2, E2.

c - Moll

Two staves of musical notation for the c - Moll scale. The first staff shows the ascending scale: C3, D3, Eb3, E3, F3, G3, Ab3, C4. The second staff shows the descending scale: Ab3, G3, F3, Eb3, D3, C3, followed by a triplet of C3, B2, A2.

f - Moll

Two staves of musical notation for the f - Moll scale. The first staff shows the ascending scale: F2, G2, Ab2, Bb2, C3, D3, Eb3, F3. The second staff shows the descending scale: Eb3, D3, C3, Bb2, Ab2, G2, F2, followed by a triplet of F2, E2, D2.

chromatische Skala

Two staves of musical notation for the chromatische Skala. The first staff shows the ascending chromatic scale: C3, C#3, D3, D#3, E3, E#3, F3, F#3, G3, G#3, A3, A#3, B3, B#3, C4. The second staff shows the descending chromatic scale: C4, B3, Bb3, Ab3, G3, Gb3, F3, Fb3, E3, Eb3, D3, Db3, C3, B2, Bb2, Ab2, G2, F2, E2, D2, C2.